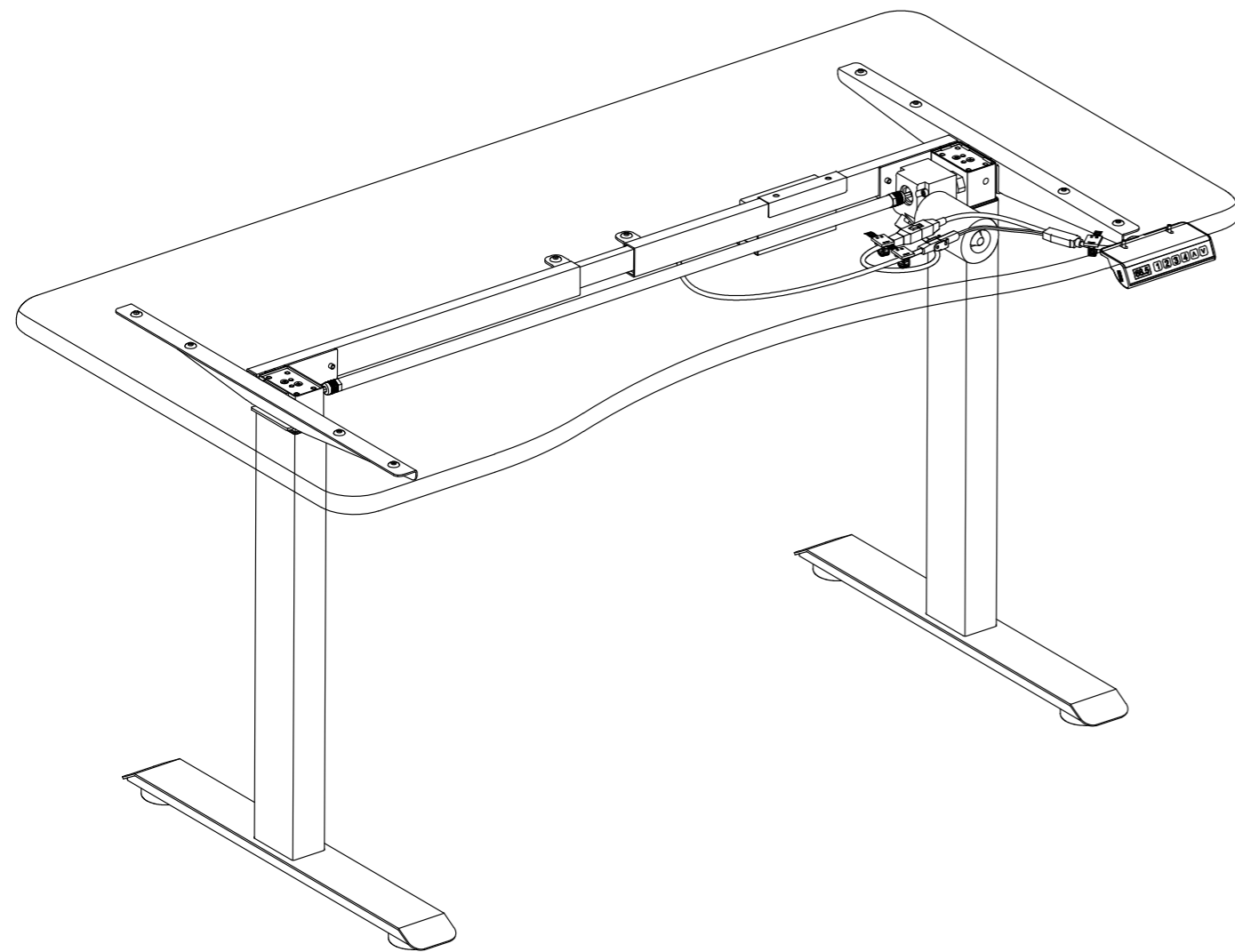




LIFTING TABLE



MPS-101

INSTALLATION INSTRUCTIONS

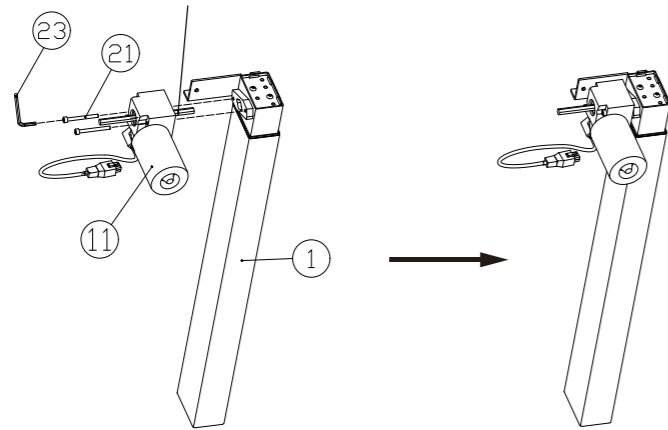
PARTS LIST

PARTS LIST			PARTS LIST		
NO.	DESCRIPTION	QTY	NO.	DESCRIPTION	QTY
①		1	⑬		1
②		1	⑭		1
③		2	⑮		16
④		2	⑯		10
⑤		1	⑰		4
⑥		1	⑱		2
⑦		1	⑲		10
⑧		1	⑳		2
⑨		1	㉑		2
⑩		1	㉒		5
⑪		1	㉓		1
⑫		1			

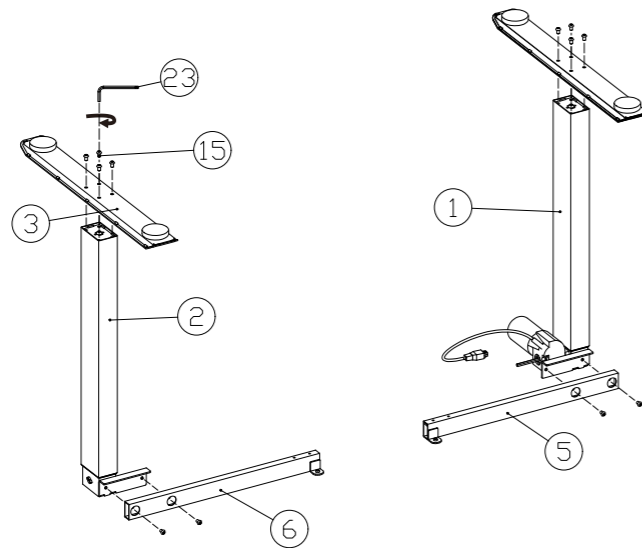
INSTALLATIONS

STEP 1

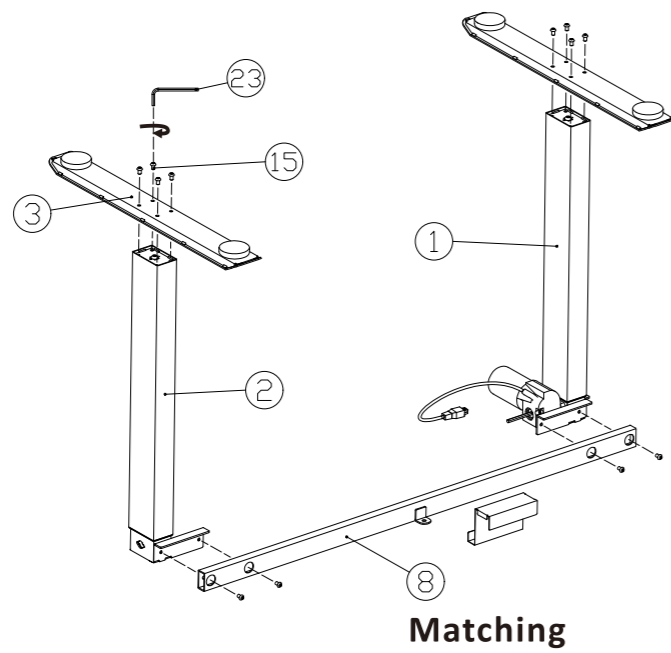
There are four bumps



STEP 2

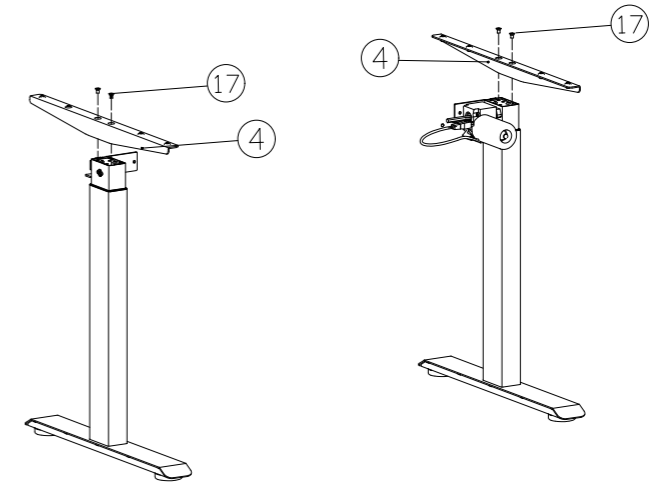


OR

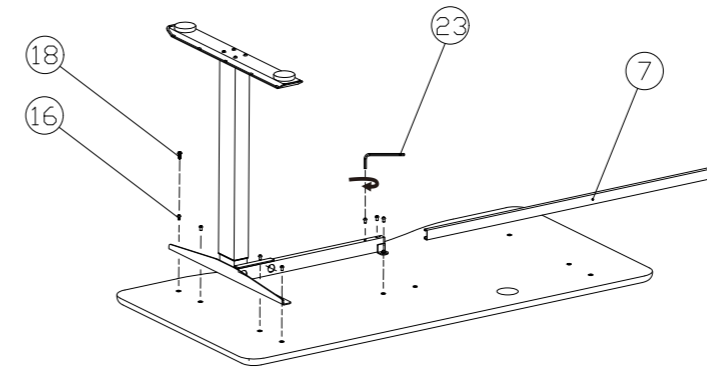


2

STEP 3

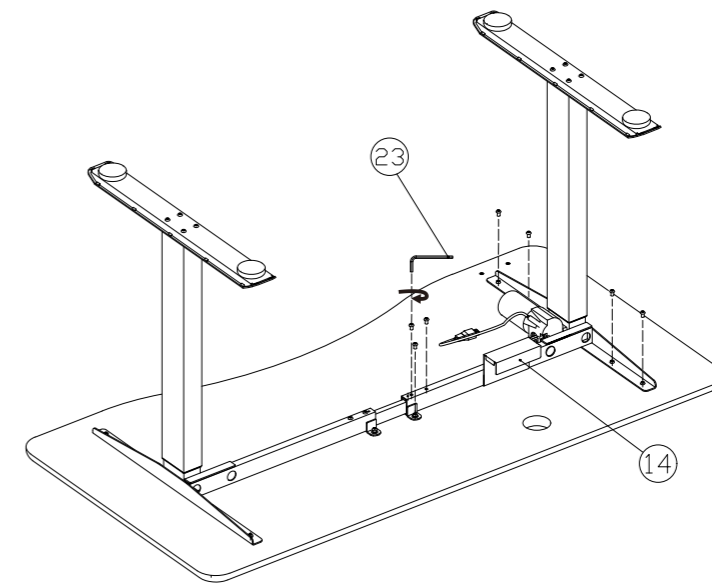


STEP 4



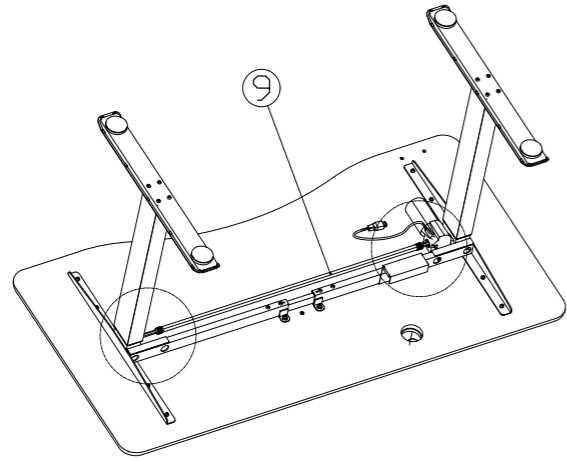
In case you have purchased the desktop at your own option, please use part ⑱ instead of part ⑰, cross screw batch of self-provided.

STEP 5



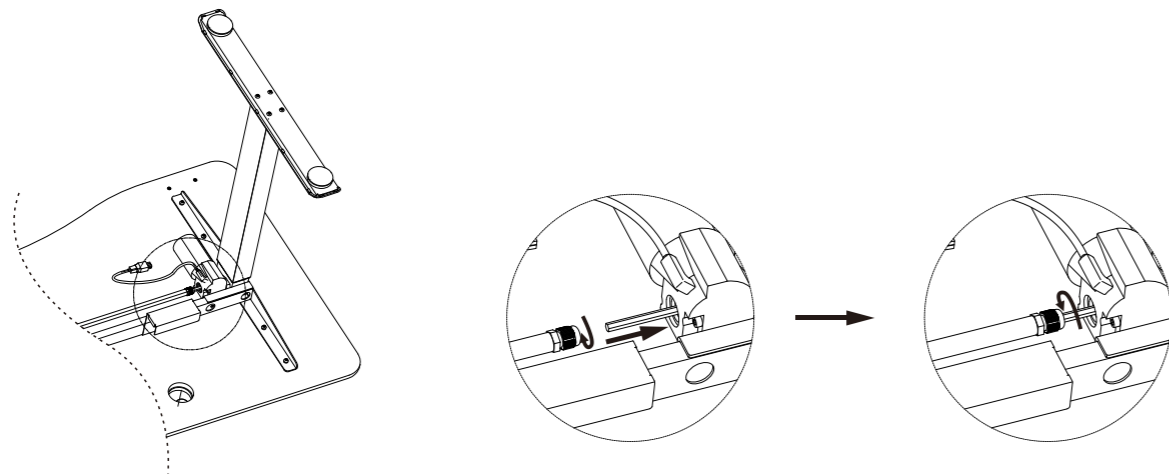
3

STEP 6

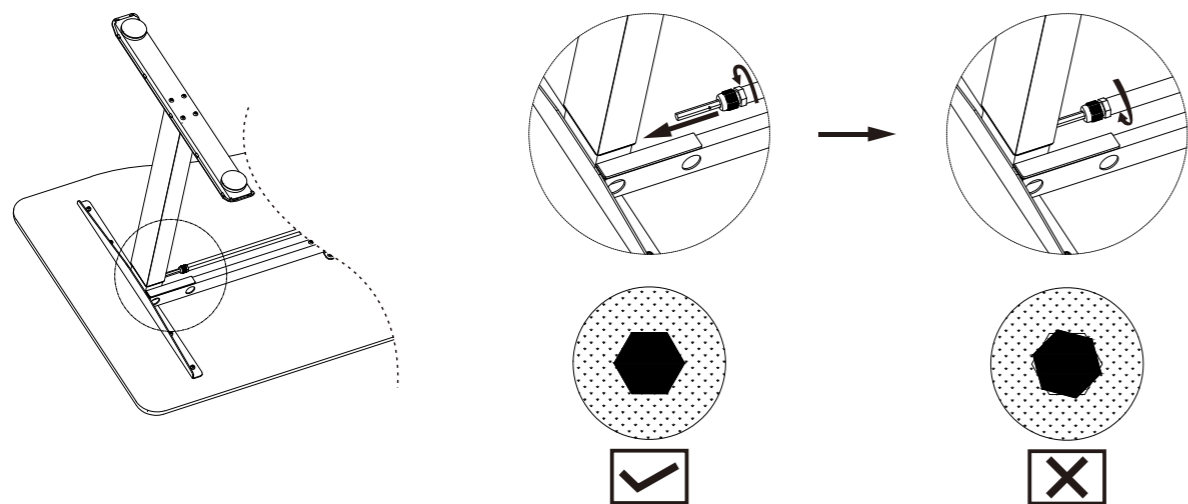


Refer to step 6-1 and step 6-2 for installation of part ⑨.

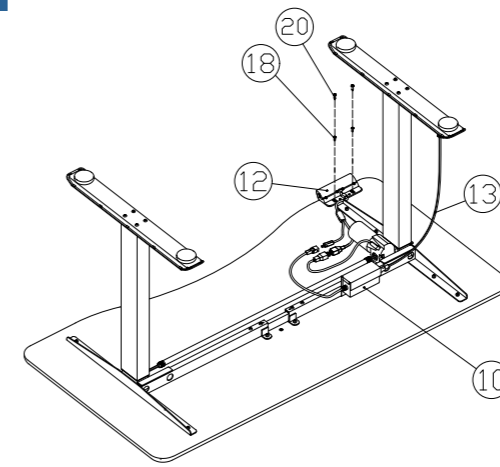
STEP 6-1



STEP 6-2

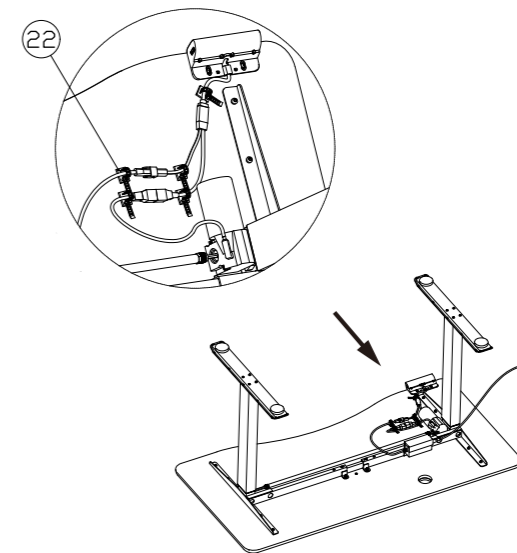


STEP 7

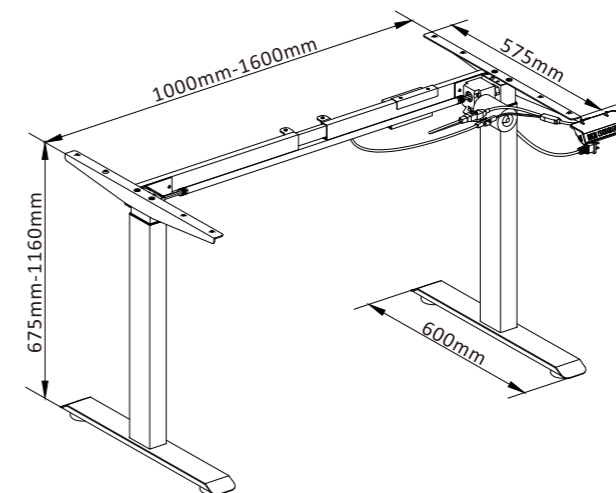


In case you have purchased the desktop at your own option, please use part ⑳ instead of part ⑱, cross screw batch of self-provided.

STEP 8



STEP 9



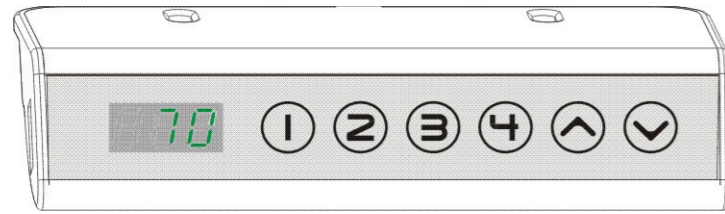
Range of adjustment

Product Model	SC101
Product Net Weight	18.5kg
Table Leg Section Number	2
Lifting Range	675-1160
Telescopic Range	1000-1600
Number Of Motors	1
Maximum Load Bearing	80kg
Height Memory	4th gear speed
Rate Of Rise And Fall	18mm/s

MPS-101

Lifting Table Controller Instruction

Operation Interface



Description of Keys:

1. Key "1": Height position ① saved by user.
2. Key "2": Height position ② saved by user.
3. Key "3": Height position ③ saved by user.
4. Key "4": Height position ④ saved by user.
5. Key "∧": UP key - press it to move the desktop up.
6. Key "∨": Down key - press it to move the desktop down.

USB Charging:

The USB port on the left side can charge your mobile phone with 5V/500mA current. An overload protection unit is included to ensure the safety of the charged mobile phone.

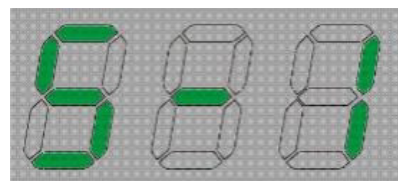
Operation Manual

● Moving Up / Down:

1. Press Key "∧", and the table will move up and stop automatically at the highest position.
2. Press Key "∨", and the table will move down and stop automatically at the lowest position.

● Saving of Height Positions:

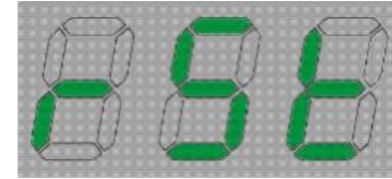
1. When the desktop remains static, press Key "1" and hold for more than three seconds until "S-1" is displayed, and the current height is saved to Key "1" successfully. During daily use, a simple click on Key "1" will enable the desktop to automatically move to the saved height position.



2. The same operation shall be conducted for saving of height positions to memory keys "2", "3" and "4".

● Resetting:

1. When the height of the desktop is incorrect, it is necessary to perform resetting operation. Press and hold Key "∨" till the desktop moves to the lowest position and release the key. Press and hold Key "∨" again for more than 3 seconds until "rSt" is displayed, and release the key. The system is now in the resetting preparation state.H



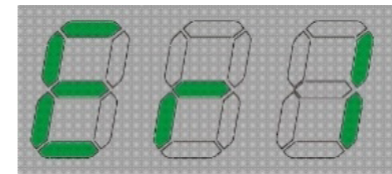
2. When "Er1" is displayed, press Key "∨" and hold for more than 3 seconds until "rSt" is displayed before releasing the key. The system is now in the resetting preparation state.
3. To reset the system, press and hold Key "∨" until the resetting process is completed after the system moves down to the lowest mechanical position and then automatically bounces upwards.

● Switching of Metric and British Units:

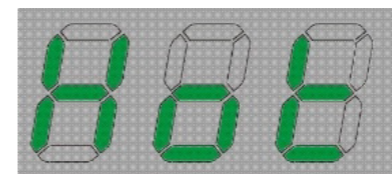
Press Key "1" and Key "2" simultaneously and hold for more than 3 seconds to switch the height display between metric and British systems.

● Code Description and Trouble Shooting:

1. Code "rSt" indicates that the system is currently in the resetting preparation state, and the resetting can be started by pressing and holding Key "∨" as described in the preceding instructions.
2. Code "Er1" indicates the occurrence of a fault, which maybe a breakdown of motor rotation or a failure to return Hall data the correct way. After the fault is verified and repaired, press and hold Key "∨" as described in the preceding instructions to enter the resetting preparation state.



3. Code "Hot" indicates that the system is overheated. Put the system in non-working condition for more than 18 minutes and it will resume normal operation.



4. If the above methods fail to solve the problem, cut off the power supply and check the components / connections of the system. Repeat the above operation after power is re-connected.
5. Please contact our customer service personnel if the table still fails to work after the above treatments.